



# fischer Universal plug UX

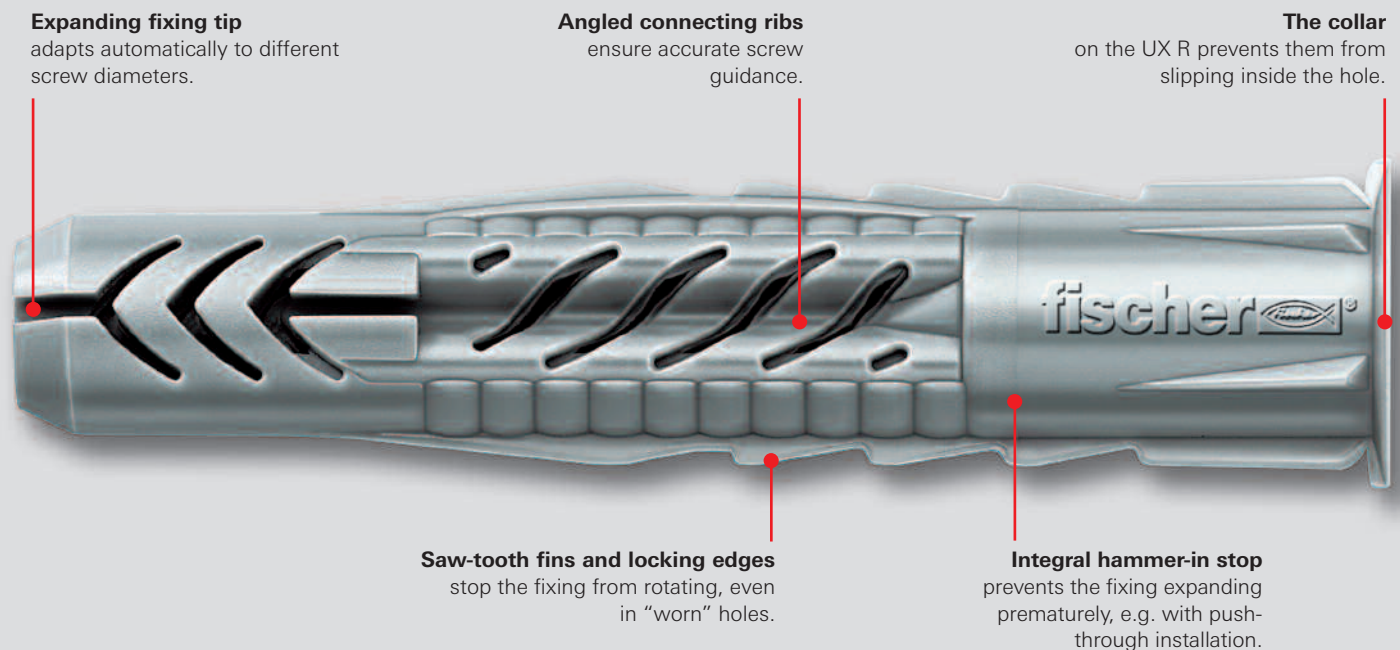
The universal plug in any wall.



**fischer**   
FIXING SYSTEMS

# Whatever the wall, one plug fits all!

## The universal plug with special features.



## Expands, anchors itself, knots itself – the UX: a real all-rounder.

Concrete or aircrete, solid plaster panel or plasterboard, solid brick or vertically perforated brick – the UX will always get a grip on it.

Its universal method of operation means the UX can adapt automatically to any substrate. It expands in solid materials, anchors itself in cavity materials, and knots itself on board materials.

This gives the reliability and freedom to fasten almost anything – from a picture above a small shelf on the wall, to curtain rails.

### The advantages at a glance

- Safe knotting in all cavities
- Strong expansion in solid building materials
- Useable in simple and double thickness plasterboard panels
- Available with a collar for cavity walls and perforated brick
- Long version available for heavier loads and to allow for plaster, tiles, etc.
- For all wood- and chipboard screws
- Low setting torque with high tightening torque (the fixing "tightens properly")
- fischer Nylon Quality

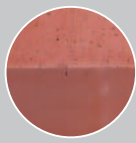


## The UX doesn't just love one wall. It loves all of them.

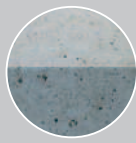
### UX wedged in solid material.



Solid block



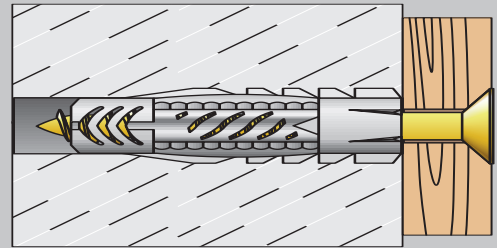
Solid brick



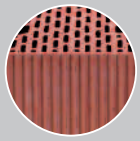
Concrete



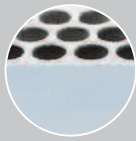
Aircrete



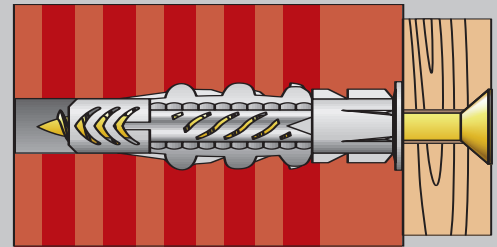
### UX anchored in a cavity.



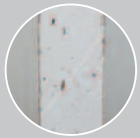
Perforated brick



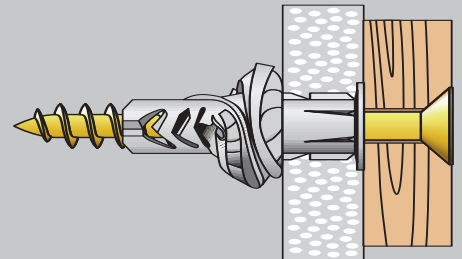
Perforated sand-lime brick



### UX knotted behind a board.

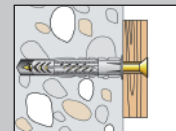
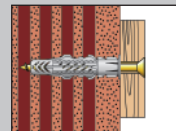
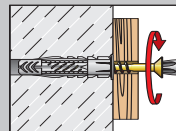
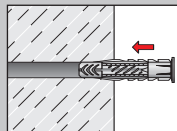
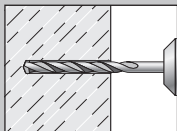


Plasterboard

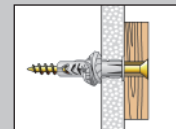
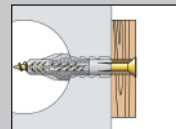
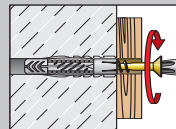
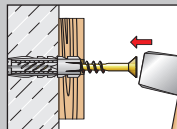
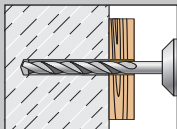


## Dogged and uncomplicated. The UX in use.

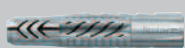
### Pre-fixing installation



### Push-through installation



# Range.



UX – without collar



UX – with collar

## Universal plug UX – without collar

Type	Art. No.	Qty. per box	Drill Ø	Min. drill hole depth	Min. panel thickness in cavity walls	Anchor length	Wood or chipboard screw
UX 5 x 30	94721	100	5 mm	40 mm	6 mm	30 mm	3 mm – 4 mm
UX 6 x 35	62754	100	6 mm	45 mm	9.5 mm	35 mm	4 mm – 5 mm
UX 6 x 50	72094	100	6 mm	60 mm	9.5 mm	50 mm	4 mm – 5 mm
UX 8 x 50	77869	100	8 mm	60 mm	9.5 mm	50 mm	4.5 mm – 6 mm
UX 10 x 60	77871	50	10 mm	75 mm	12.5 mm	60 mm	6 mm – 8 mm
UX 12 x 70	62758	25	12 mm	85 mm	–	70 mm	8 mm – 10 mm
UX 14 x 75	62757	20	14 mm	95 mm	–	75 mm	10 mm – 12 mm

## Universal plug UX – with collar

UX 5 x 30 R	94722	100	5 mm	40 mm	6 mm	30 mm	3 mm – 4 mm
UX 6 x 35 R	62756	100	6 mm	45 mm	9.5 mm	35 mm	4 mm – 5 mm
UX 6 x 50 R	72095	100	6 mm	60 mm	9.5 mm	50 mm	4 mm – 5 mm
UX 8 x 50 R	77870	100	8 mm	60 mm	9.5 mm	50 mm	4.5 mm – 6 mm
UX 10 x 60 R	77872	50	10 mm	75 mm	12.5 mm	60 mm	6 mm – 8 mm



UX RH



UX WH W



UX R S

## Universal plug UX – with collar (RH) and angle hook (WH), zinc plated

Type	Art. No.	Qty. per box	Drill Ø	Min. drill hole depth	Min. panel thickness in cavity walls	Anchor length	Wood or chipboard screw
UX 6 x 35 RH	94407	25	6 mm	45 mm	9.5 mm	35 mm	
UX 6 x 35 WH	94408	25	6 mm	45 mm	9.5 mm	35 mm	
UX 8 x 50 RH	94409	25	8 mm	60 mm	9.5 mm	50 mm	
UX 8 x 50 WH	94410	25	8 mm	60 mm	9.5 mm	50 mm	

## Universal plug UX – with hook, nylon-coated, white

UX 8 x 50 RH W	94412	25	8 mm	60 mm	9.5 mm	50 mm	
UX 8 x 50 WH W	94413	25	8 mm	60 mm	9.5 mm	50 mm	
UX 8 x 50 OE W	94414	25	8 mm	60 mm	9.5 mm	50 mm	

## Universal plug UX – with screws

UX 6 x 35 R S/20	94758	25	6 mm	60 mm	9.5 mm	35 mm	4,5 x 60
UX 6 x 50 R S/20	94759	25	6 mm	75 mm	9.5 mm	50 mm	4,5 x 75
UX 8 x 50 R S/15	94762	25	8 mm	70 mm	9.5 mm	50 mm	5 x 70
UX 8 x 50 R S/25	94760	25	8 mm	80 mm	9.5 mm	50 mm	5 x 80
UX 10 x 60 S/20	94761	10	10 mm	85 mm	12.5 mm	60 mm	6 x 85

## Recommend loads $F_{rec.}$ (kN)

Materials	UX 6 x 35	UX 6 x 50 L	UX 8	UX 10	UX 12	UX 14
Concrete $\geq$ C12/C55	0.4	0.6	0.6	1.0	1.5	1.8
Solid brick $\geq$ Mz 12	0.2	0.3	0.3	0.5	0.7	0.8
Sand-lime perforated brick $\geq$ KSL 12	0.4	0.4	0.5	0.6	0.8	0.8
Vertical perforated brick $\geq$ Hz 12	0.2	0.2	0.2	0.2	0.3	0.4
Aircrete P4	0.2	0.2	0.3	0.4	0.6	0.7
Plasterboard 12.5 mm	0.1	0.1	0.1	0.1	–	–
Plasterboard 2 x 12.5 mm	0.15	0.15	0.15	0.15	–	–
Gypsum fibreboard (Fermacel)	0.2	0.2	0.2	0.25	–	–

\* These values apply when using woodscrews with the largest screw diameter as per DIN 7998 at the upper tolerance. The fixing must be installed to its full anchoring depth in the load-bearing substrate. Make sure the drilling method matches the material being drilled. Due to the variable quality of joints, the values only refer to installation in the actual building material. The recommended loads allow for a safety factor of at least 7.

Your dealer:

For information on the entire fischer programme including recommended loads, please refer to our comprehensive general catalogue or visit our website at [www.fischer.de](http://www.fischer.de)